
5 4 0 9

MONTERREY CLUB COURT

OVERSIZED LOT WITH BEAUTIFUL GOLF VIEWS



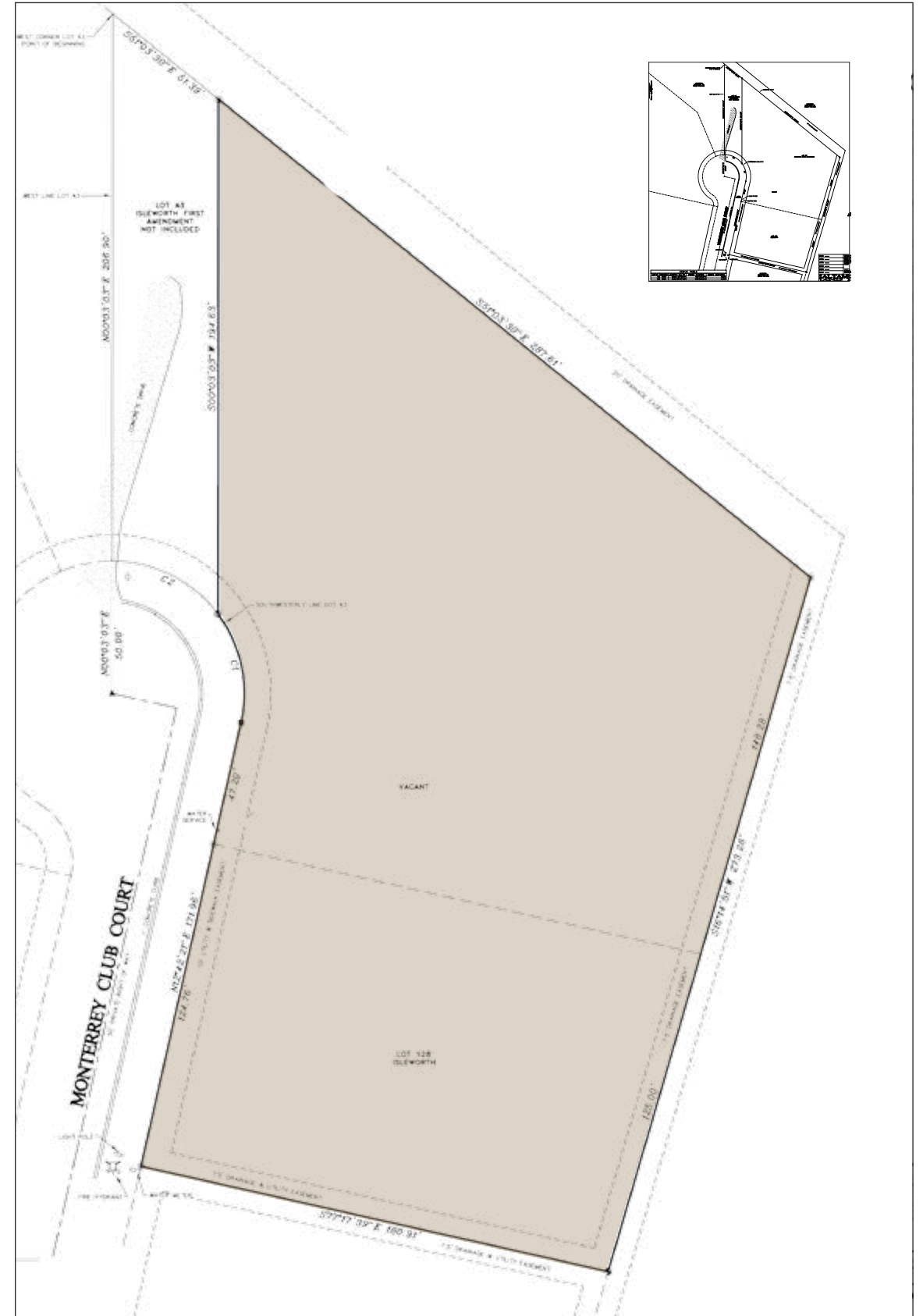
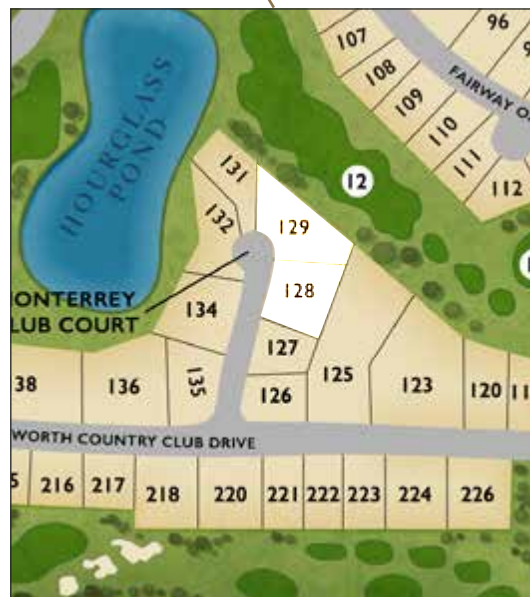
Isleworth



AT A GLANCE

ACRES: 1.56
VIEWS: GOLF

Positioned along the back nine of Isleworth's renowned championship golf course, this 1.56-acre home site offers beautiful golf views. Overlooking the 12th fairway, the oversized lot presents the perfect opportunity to build within the gates of Central Florida's most iconic golf course community.





The 600-acre private golf community is situated among the pristine Butler Chain of Lakes, and is recognized as one the finest country club communities in the world by Travel + Leisure. Within its secure environment Isleworth has a wide array of amenities that suit every pursuit.

CONTACT

For more information or to speak with a luxury property specialist,
please contact:

ISLEWORTH REALTY

9350 Conroy Windermere Road
Windermere, Florida 34786

407.876.0111

sales@isleworth.com

Isleworth

isleworth.com

A TAVISTOCK GROUP PROPERTY