
5306

ISLEWORTH COUNTRY CLUB DRIVE

MULTIPLE GOLF AND WATER VIEWS



Isleworth

5 3 0 6

ISLEWORTH COUNTRY CLUB DRIVE

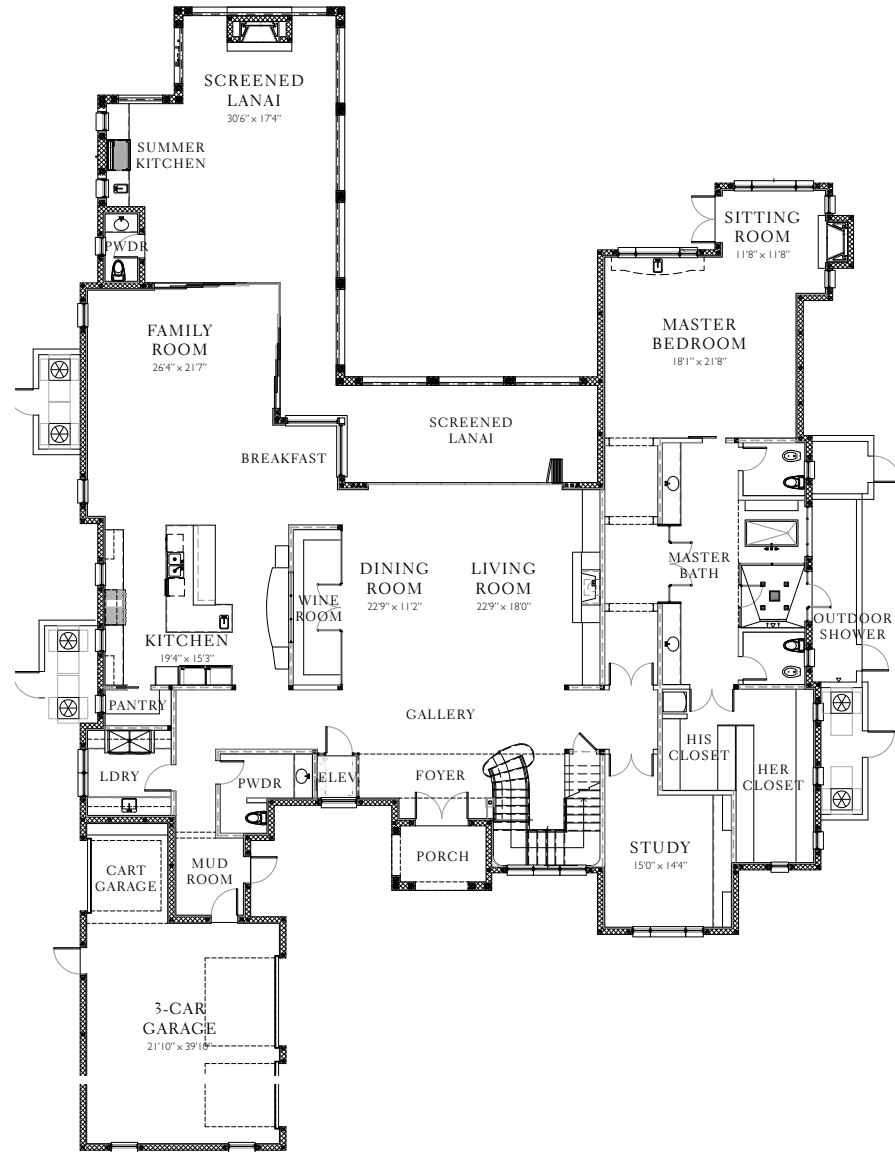
MULTIPLE GOLF AND WATER VIEWS

Under construction. Designed by renowned architect Terry Irwin and currently being built by leading custom homebuilder Wyatt Construction, this two-story estate will offer five bedrooms and more than 8,800 square feet of living space. Nestled along the back nine within the gates of the renowned Isleworth Golf & Country Club, the estate will afford beautiful finishes and living spaces set against a backdrop of multiple golf and water views, including Eagle Pond and Holes 11 and 12.

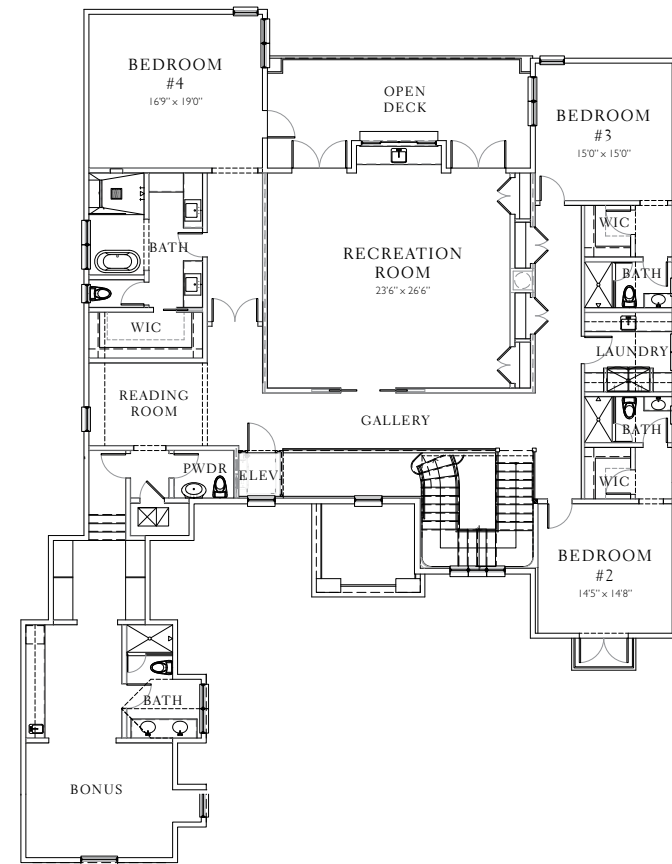


FLOORPLAN

BEDROOMS	5
FULL BATHROOMS	5
HALF BATHROOMS	3
TOTAL AIR-CONDITIONED SQ FT	8,802
LOT SIZE	0.57 ACRE
VIEWS	GOLF, POND
ARCHITECT	TERRY IRWIN ARCHITECTS
BUILDER	WYATT ANDERSON CONSTRUCTION



MAIN LEVEL



UPPER LEVEL

All dimensions, features and specifications are approximate and subject to change without notice. Prices and availability are subject to change without notice. These drawings are conceptual only and are for the convenience of reference. They should not be relied upon as representation express or implied of the final detail of the residences. Oral representations cannot be relied upon as correctly stating representations of the developer. For correct representations, make reference to this brochure and to the documents required by section 718.503, Florida Statutes, to be furnished by a developer to a buyer or lessee. Void in states where prohibited by law, including New York, California and New Jersey. Prices and availability subject to change without notice.



ISLEWORTH

More than a century ago, Isleworth earned its namesake when pioneering citrus producers Sydney and Joshua Chase came across this bountiful piece of land dotted by lush orange groves and surrounded by lakes on nearly all sides. When it was discovered that the surrounding Butler Chain of Lakes insulated the citrus during a cold snap, the Chase family immediately recognized the worth of this place calling it an “Isle of Worth.”

For several decades, Isleworth thrived as a citrus-producing operation before golf legend Arnold Palmer uncovered its potential for a world-class golf course and country club. Leading its transformation from a vibrant citrus grove to a dream golf community, Palmer made his grand vision for Isleworth a reality in 1986.

In 1993, the Lewis family reimagined Isleworth by planting thousands of trees and flowers, installing a collection of important sculptures, and constructing magnificent estates fostering the most exquisite architecture to create one of the finest communities in the world.

To this day, Isleworth remains true to its name.



The 600-acre private golf community is situated among the pristine Butler Chain of Lakes, and is recognized as one the finest country club communities in the world by Travel + Leisure. Within its secure environment Isleworth has a wide array of amenities that suit every pursuit.



CONTACT

For more information or to speak with a real estate agent, please contact

ISLEWORTH REALTY

9350 Conroy Windermere Road
Windermere, Florida 34786

407.876.0111

sales@isleworth.com

Isleworth

isleworth.com

A TAVISTOCK GROUP DEVELOPMENT